

# Sunfloater

# FLOATING PV MOUNTING SYSTEM

## Overview

Floating PV Mounting System is applied to solar pv power plant installation on the water. Adopting HDPE material, it has passed the Hunt Water Absorption Test, Anti-Aging Test, Anti-UV Test etc. Moreover, it can bear the pulling force that is much higher than other products. Adopting new module design in floater and main floater, it can realize the array of double row in the same facing or in symmetrical facing, which can increase the efficiency of solar power generation and installation capacity, be easily installed, and save the cost, and its lifetime has more than 25 years.



Applicable on  
water surface



Tilt Angle



Clearance above water  
>300mm



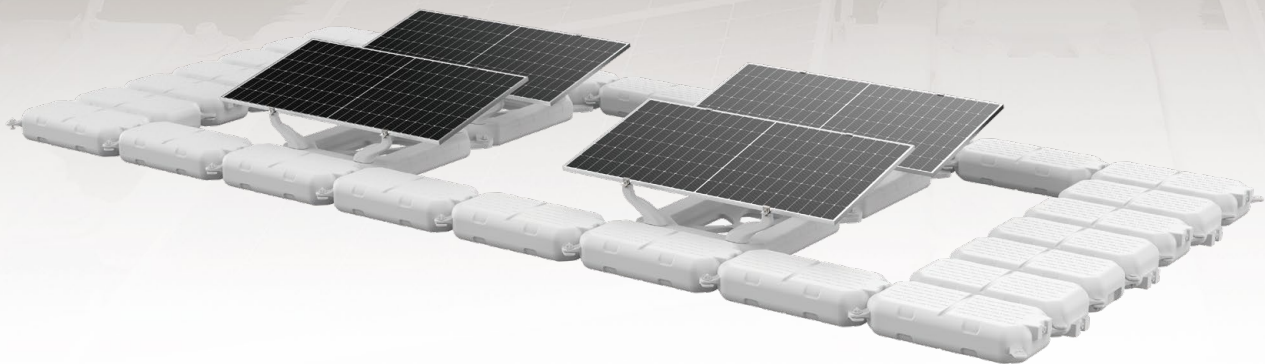
Applicable modules:  
frame or frameless



Orientation:  
landscape

10

Years  
Warranty



## Advantages

Modular design, simple and convenient splice installation;

The floater is made of high density polyethylene, which ensures its long service time;

Various array design, easier to combine;

Compatible with various solar module, save the cost;

Increase the volume of floater to add the buoyant force of floater;

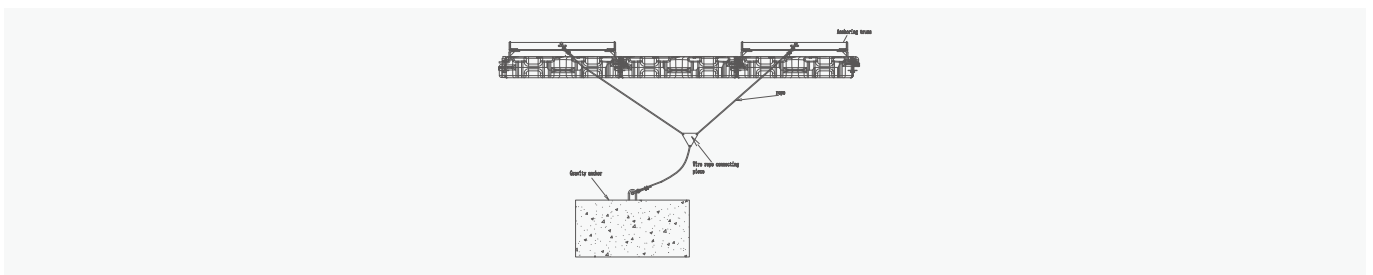
Realize symmetrical facing array, increase the installation capacity, maximize the efficiency of power generation;

Strong weather ability, easy to operation and maintenance.

## Technical Parameters

System Name	Floating PV Mounting System G4N	Design Standard	Euro Code/EN1991/1993/1994, BS 6399, ASCE 7-10
Installation Site	Lake, Reservoir		International Building Code IBC 2009, California Building Code CBC 2010
Tilt Angle	5°/10°/15°	Material	HDPE
Wind Load	≤42m/s	Fastener	Zinc-Nickle Alloy & HDPE&Q235B
Snow Load	≤1KN/m²	Small Components	AL6005-T5 (Anodized)
Water Surface Clearance	>300mm	Color	Gray or Customized
Applicable Solar Module	Frame or Frameless	Bearing Weight	Module Floater 70KG/m², Walkway Floater 155KG/m²
Panel Orientation	Landscape, Double Row		

## Structure



## Component Details



**Portrait Walkway Floater**

Material :  
HDPE



**Short Horizontal Walkway Floater**

Material :  
HDPE



**Long Horizontal Walkway Floater**

Material :  
HDPE



**Module Floater**

Material :  
HDPE



**Support**

Material :  
HDPE



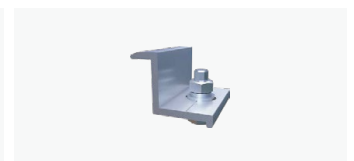
**Plastic Bolts and Nuts**

Material :  
HDPE



**Module Clamp**

Material :  
AL6005-T5 (Anodized)



**End Clamp Kit**

Material :  
AL6005-T5 (Anodized)  
SUS304

## Installation Guide



Module Floater



Install Support



Install Module Clamp



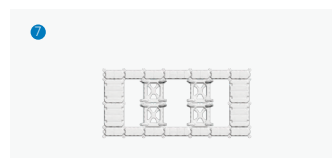
Install Module



Connect the Module Floater with Walkway Floater



Connect the Floaters with Plastic Bolts and Nuts



Finish the installation of floaters



Installation is done