

BallastedRack

BALLASTED ROOF SOLAR PV MOUNTING SYSTEM – SINGLE SIDE

Overview

Ballasted-single Side Solar Pv Mounting System is a non-penetration solution for flat rooftop, to meet different tilt angles installation. It is applicable to the roof areas with medium wind load. Quick installation and stable structure are assured by the modular patented design.



Applied to Flat Roof



Tilt Angle



Suitable for Framed or Frameless Solar Modules

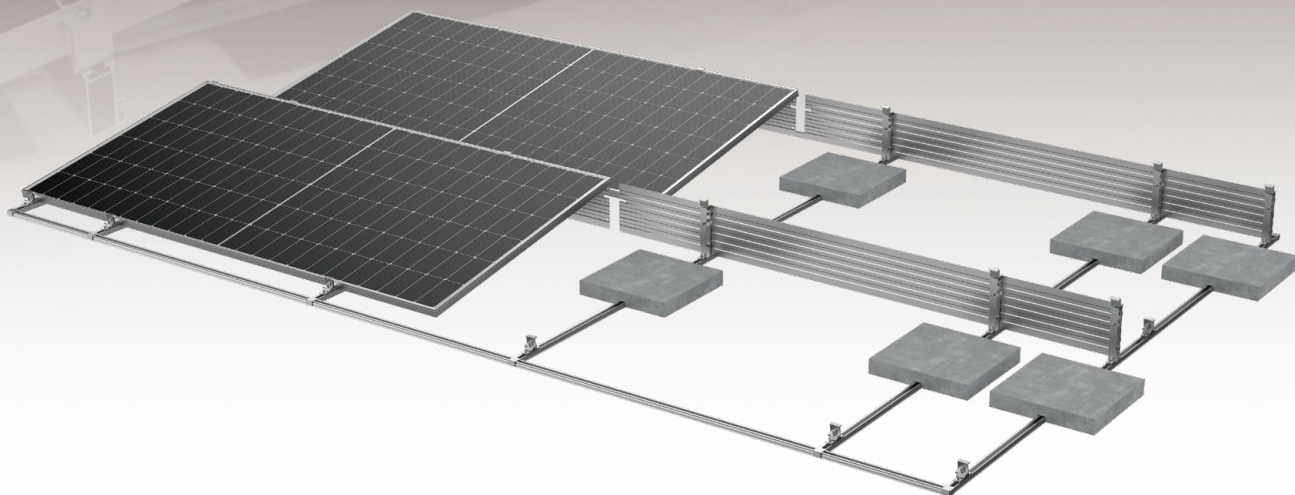


Panel Layout: Landscape & Portrait

10

YEARS

Warranty



Advantages

High Durability Ensure the Structure Strength

Professional structure design and high-density aluminum material ensure the stability and strength of the structure.

Unique Matrix Design

The matrix design further assures the stability of the whole system, and flexibly compatible with concrete block or ballast foundation.

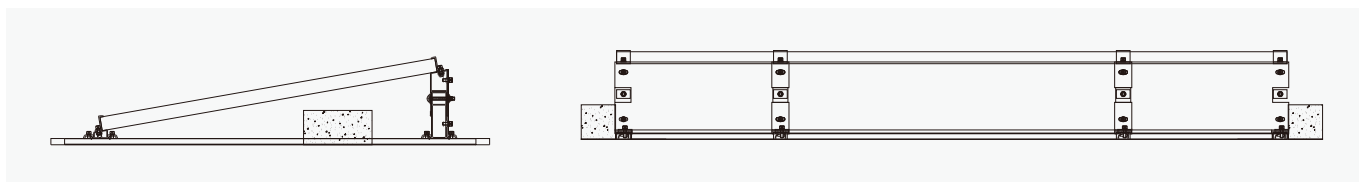
Reasonable Installation and Package Design

Simplified components configuration lead to quicker installation and smaller package size, saving installation cost and freight.

Technical Parameters

System Name	Ballasted Mounting System-Single Side	Design Standard	Euro Code/EN1991/1993/1994, BS 6399, ASCE 7-10
Installation Site	Flat Concrete roof, Flat ground, Membrane roof		International Building Code IBC 2009, California Building Code CBC 2010
Roof Type	Concrete Ballast	Material	Q235B(Hot-Dip Galvanized) AL6005-T5(Anodized)
Tilt Angle	0-30°	Fastener	SUS304, Hot Dip Galvanized, Zinc-Nickel Alloy Electroplated Steel
Wind Load	≤44m/s	Small Components	AL6005-T5(Anodized)
Snow Load	≤1.6KN/m²	Color	Silver or Customized
Applicable Solar Module	Framed/Frameless, Any width panel	Warranty	10-Year Warranty
Panel Layout	Landscape		

Structure



Component Details



GM Rail

Specification :L1350,L2700
Material : AL6005-T5(Anodized)



Front Support Plate(Nut)

Specification :L50
Material :AL6005-T5(Anodized)



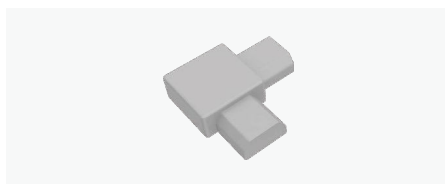
Rear Support Plate(Upper) (10°)

Specification :L50
Material :AL6005-T5(Anodized)



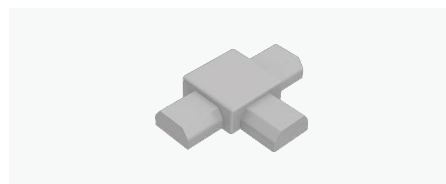
Rear Support Plate(Down)(10°)

Specification :L50
Material :AL6005-T5(Anodized)



GM Rail's Two Way Connector

Specification :L65
Material : PP



GM Rail's Three Way Connector

Specification :L90
Material :PP



Corrugated Gasket Anchor Kit M8*75

Specification :L60
Material : AL6005-T5(Anodized)



End Clamp Kit

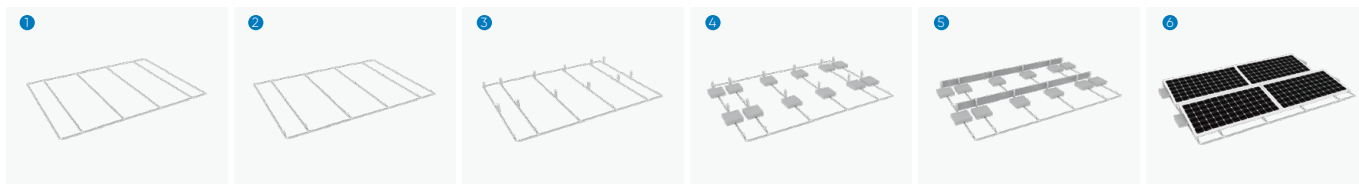
Components :
End Clamp
Spring Washer M8
Hexagon Socket Bolt



C Clamp Kit

Components :
C Clamp
Cross Module
Spring Washer M8
Hex Socket Head Bolt

Installation Guide



1 Connect the GM rail with connector

2 Install the front support plate

3 Install the rear support plate

4 Put the cement pier

5 Install the wind deflectors

6 Install the panel, then the installation is done

BallastedRack

BALLASTED ROOF SOLAR MOUNTING SYSTEM – EAST WEST / TWO-SIDE

Overview

Ballasted East West/Two Side Solar Mounting System is a non-penetration solution for flat rooftop, to meet different tilt angles installation. It is applicable to the roof areas with medium wind load. Quick installation and stable structure are assured by the modular patented design.



Applied to Flat Roof



Tilt Angle



Suitable for Framed or Frameless Solar Modules

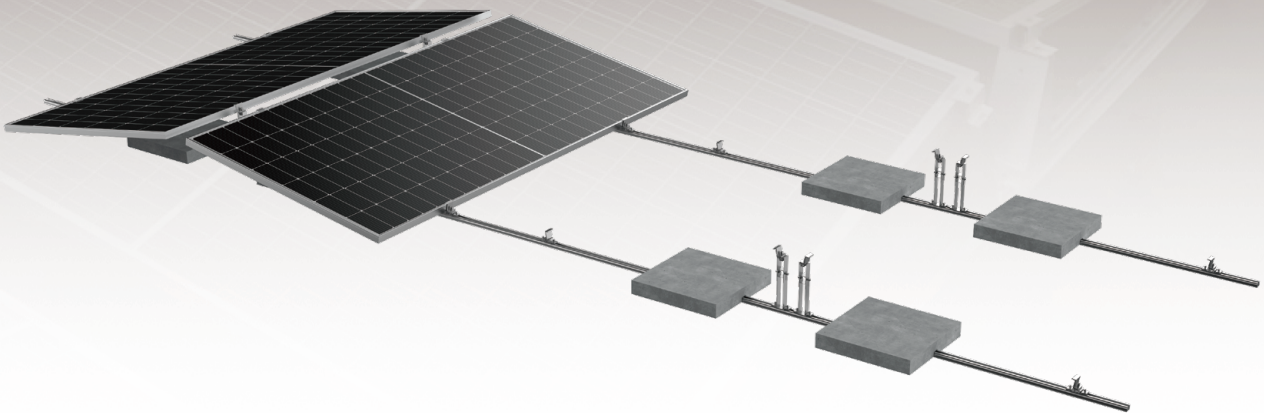


Panel Layout Landscape & Portrait

10

YEARS

Warranty



Advantages

High Durability Ensure the Structure Strength

Professional structure design and high-density aluminum material ensure the stability and strength of the structure.

Unique Matrix Design

The matrix design further assures the stability of the whole system, and flexibly compatible with concrete block or ballast foundation.

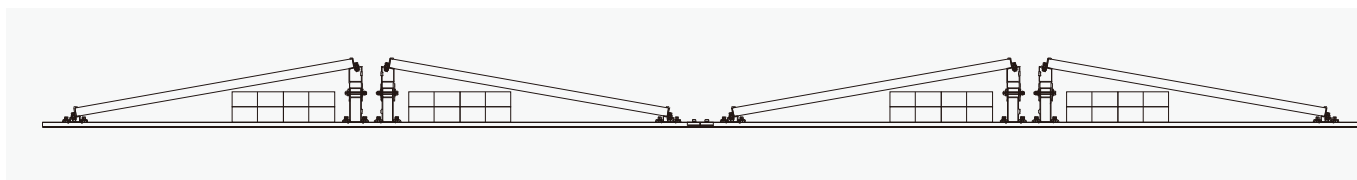
Reasonable Installation and Package Design

Simplified components configuration lead to quicker installation and smaller package size, saving installation cost and freight.

Technical Parameters

System Name	Ballasted East West/Two Side Solar Mounting System	Design Standard	Euro Code/EN1991/1993/1994, BS 6399, ASCE 7-10
Installation Site	Flat Concrete roof, Flat ground, Membrane roof		International Building Code IBC 2009, California Building Code CBC 2010
Roof Type	Concrete Ballast	Material	AL6005-T5(Anodized)
Tilt Angle	10°		Fastener
Wind Load	≤44m/s	Small Components	AL6005-T5(Anodized)
Snow Load	≤1.6KN/m ²		Color
Applicable Solar Module	Framed/Frameless, Any width panel	Warranty	10-Year Warranty
Panel Layout	Landscape		

Structure

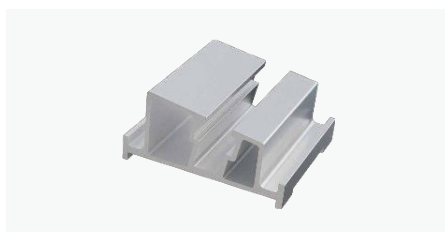


Component Details



GM Rail

Specification :
L1350,L2700
Material :
AL6005-T5(Anodized)



Front Support Plate(Nut)

Specification :
L50
Material :
AL6005-T5(Anodized)



Rear Support Plate(Upper) (10°)

Specification :
L50
Material :
AL6005-T5(Anodized)



Rear Support Plate(Down)(10°)

Specification :
L50
Material :
AL6005-T5(Anodized)



C Clamp Kit

Components :
C Clamp
Cross Module
Spring Washer M8
Hex Socket Head Bolt



End Clamp Kit

Components :
End Clamp
Spring Washer M8
Hexagon Socket Bolt

Installation Guide



Put the GM Rail



Install the support plate.



Put the cement pier.



Install the module



Complete installation