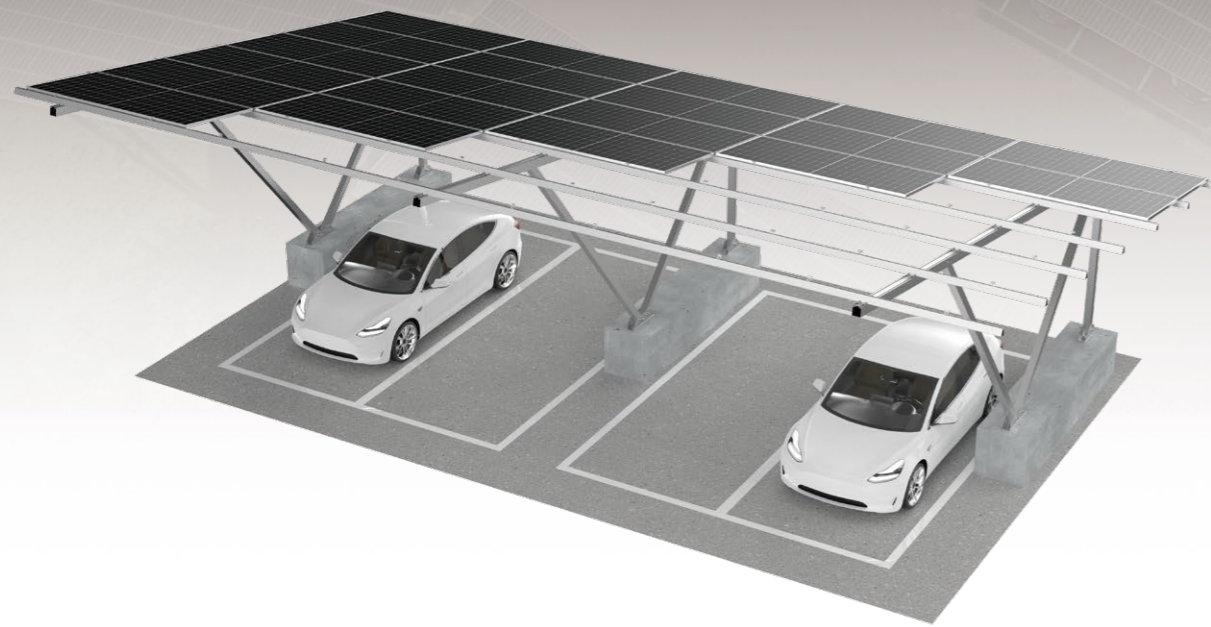


SunShade

SOLAR CARPORT SYSTEM II

Overview

The idle area of the parking shed is used to build a photovoltaic parking shed, and the combination of photovoltaic power generation and carport is the simplest one in the combination of photovoltaic and building. It can not only achieve all the functions of the traditional carport, but also bring electricity generation benefits to the owner. It is stored in the battery by the charging device or directly supplied to the electric vehicle to charge for self-use. You can even use extra power to get online. Using aluminum alloy structure bracket, simple installation, generous, fashionable, beautiful.



Advantages

Customized Solution

Design case by case, making a good utilization of ground resource and pursuit for easy and quick installation.

Save Installation Time and Labor Cost on Site

With installation manuals and system solution, the construction on site will be simple. Less construction time directly reduces project costs.

High Waterproof

The special waterproof conforms to the structure of system, which make the performance Stronger

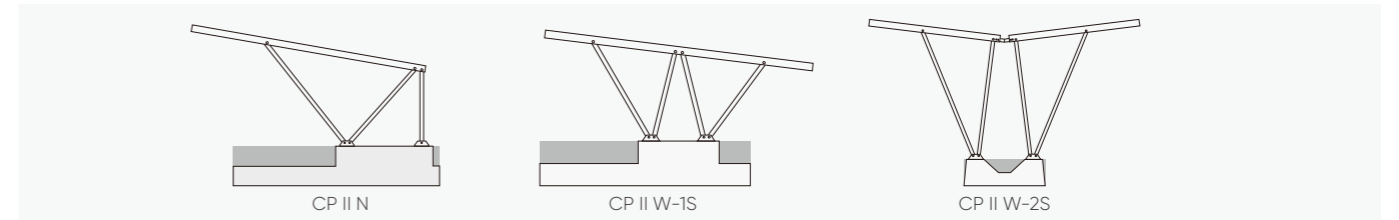
Compatible to Varied Solar Modules

With SunRack module clamps, the system compatible with most kinds of framed and frame and frameless modules.

Technical Parameters

System Name	Open Area	Design Standard	Euro Code/EN1991/1993/1994, BS 6399, ASCE 7-10
Foundation	Concrete Base		International Building Code IBC 2009, California Building Code CBC 2010
Tilt Angle	5-15°	Hook Material	AL6005-T5(Anodized)
Wind Load	≤45m/s	Fastener	SUS304 & Zinc-Nickel Alloy Electroplated Steel
Snow Load	≤1.2KN/m²	Small Components	AL6005-T5(Anodized)
Ground Clearance	≤2000mm+	Color	Silver or Customized
Applicable Solar Module	Framed or Frameless	Warranty	10-Year Warranty
Panel Layout	Portrait or Landscape		

Structure



Component Details

<p>Conical Symmetric Cross Beam 135 Specification : L*58*135 Standard Length: 3300mm 5000mm</p>	<p>Splice for Conical Symmetric Cross Beam 135 Specification : L260mm Components : Hexa Self-Tapping Screw With EPDM Washer ST6.3*19</p>	<p>Beam 160 Specification : L*100*100 Material : AL6005-T5(Anodized)</p>	<p>C Clamp Kit Components : C Clamp Symmetric Cross Module Spring Washer M8 Hexagon Socket Bolt</p>	<p>Wide End Clamp Kit Components : Wide End Clamp Symmetric Cross Module Spring Washer M8 Hexagon Socket Bolt</p>
<p>U25 Inter Clamp Kit Components : U25 Inter Clamp Symmetric Cross Module Spring Washer M8 Hexagon Socket Bolt</p>	<p>Anchor Plate for Carport(L250) Specification : 62*49*L250 Material : AL6005-T5(Anodized)</p>	<p>Square Tube Specification : L*100*100 Material : AL6005-T5(Anodized)</p>	<p>Anchor Plate for Carport(L450) Specification : 62*49*L450 Material : AL6005-T5(Anodized)</p>	<p>Waterproof for Cross Beam Specification : L*100*100</p>

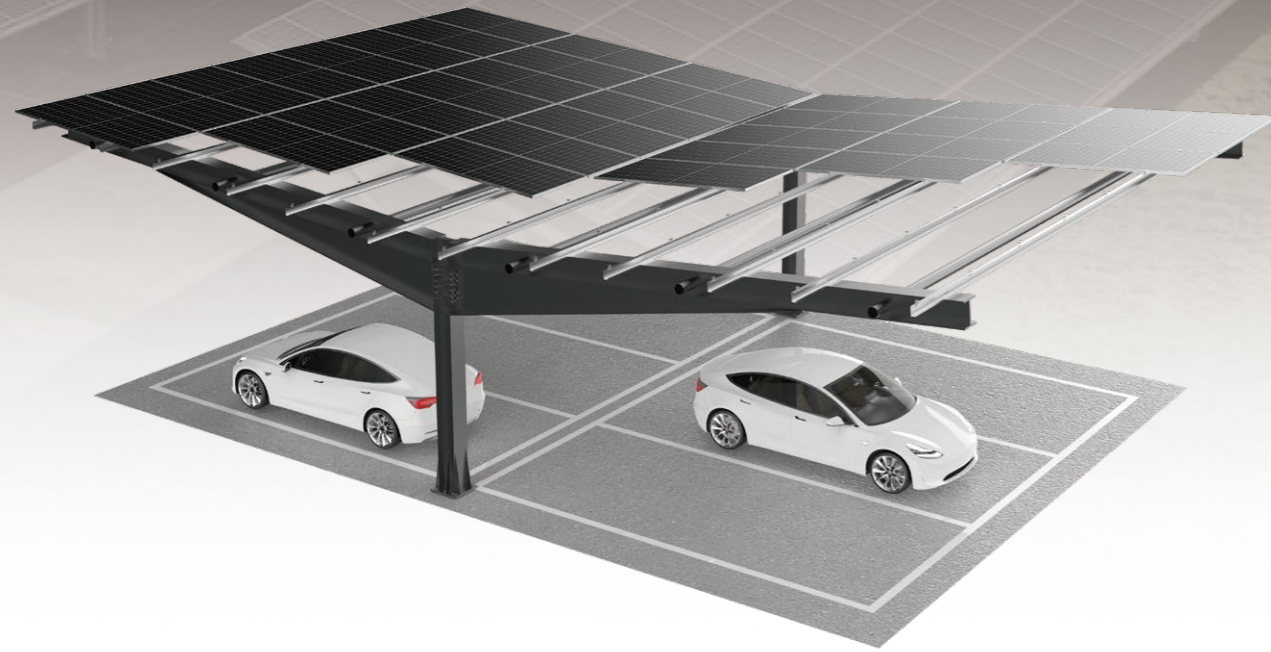
Installation Guide

<p>1 Grout the bolt embedded on the concrete foundation based on project solution.</p>	<p>2 Fix Corrugated T Anchor Plate Kit on the concrete foundation.</p>	<p>3 Connect the Pre-assemble Support with the Anchor Plate Kit on the concrete foundation.</p>	<p>4 The installation of Pre-assemble Support is done.</p>	<p>5 Install beam.</p>	<p>6 The installation of beam is done.</p>	<p>7 Fix the solar module with Inter Clamp Kit & End Clamp Kit.</p>	<p>8 Installation is done.</p>
--	--	---	--	------------------------	--	---	--------------------------------

SunShade MONO CARPORT SYSTEM

Overview

Pro Mono Carport System is mainly customized according to customer site requirements, which is convenient parking, beautiful appearance. PV carport not only has the function of ordinary carport, but also can generate electricity and income through solar power generation. Professional solutions bring you a simple and convenient installation experience, SunRack engineers have been committed to optimize the system design, products and service quality, and provide you with the best quality solutions of photovoltaic shed.



Advantages

Customized Solution

Design case by case, making a good utilization of ground resource and pursuit for easy and quick installation.

Save Installation Time and Labor Cost

Pre-assembled Components Save Onsite Installation Time Solution design case by case, most components pre-assembled in factory, no onsite cut and drill request, saving the onsite installation time and cost.

Convenient parking and beautiful appearance

The single column design makes the structure simpler, minimizes obstruction, and facilitates parking and access.

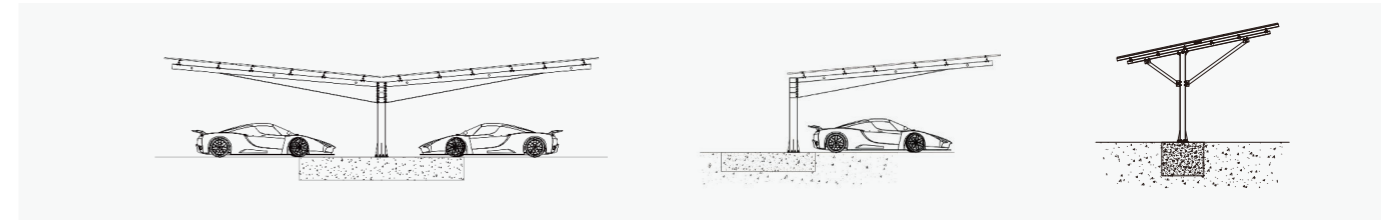
Compatible to Varied Solar Modules

With module clamps, the system compatible with most kinds of framed 60-cell, 72-cell.

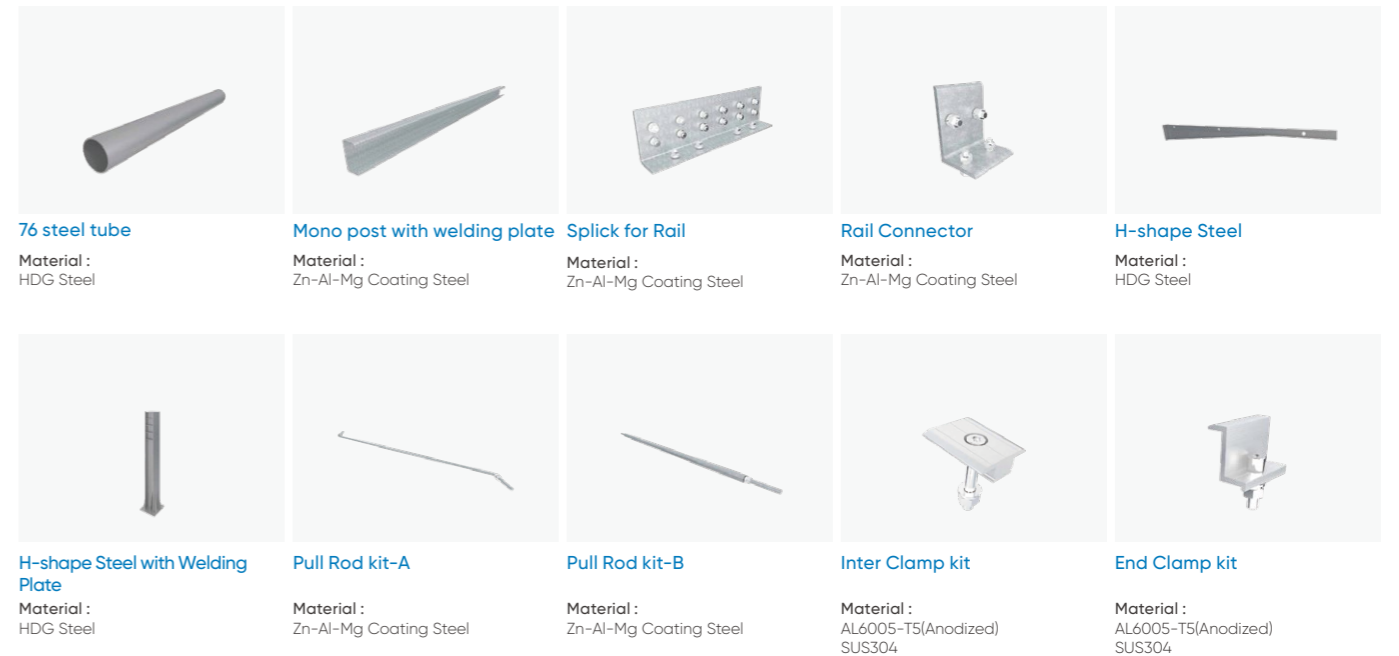
Technical Parameters

System Name	Open Area	Design Standard	Euro Code/EN1991/1993/1994, BS 6399, ASCE 7-10 International Building Code IBC 2009, California Building Code CBC 2010
Foundation	Concrete Foundation	Hook Material	Zn-Al-Mg Coating Steel & HDG Steel
Tilt Angle	5-15°	Fastener	Zn-Ni Alloy & SUS304 & HDG Steel
Wind Load	≤50m/s	Small Components	AL6005-T5 (Anodized)
Snow Load	≤1.6KN/m ²	Color	Silver or Customized
Ground Clearance	≤1800mm~3000mm	Warranty	10-Year Warranty
Applicable Solar Module	Framed or Frameless		
Panel Layout	Portrait or Landscape		

Structure



Component Details



Installation Guide

